

# GUEST CONTRIBUTOR SERIES

CURATED BY ERIN HARDICK

In the words of every significant other, “How does it look?” We promised you a fresh new look to come with the changing of the seasons, so here it is! This week we’re looking at changing enterprise and continuing a multi-part spotlight on electric co-ops. We also have some insight into California’s grid emergency. Enjoy Volume 21!

## TAMING ENTERPRISE

HUSSAIN ABBASI

Large ships turn slow. The same is true for large organizations. Throughout the organization, plenty of new systems and workflows introduced by business units are met with poor adoption. Often these new systems cause users frustration to increase. As a result, the users abandon them.

[Read the full article here](#)



## LAST WEEK'S GRID EMERGENCY IN CALIFORNIA

JILL ANDERSON

The most impressive and historic aspect of California’s recent grid emergency came in the days that followed the rotating outages on August 14 and 15. For nearly a week in the unrelenting heat, California customers came to the rescue when power to the grid was in short supply.

[Read the full article here](#)



## REIMAGINING YOUR HORIZON PART 2

GAP INTERNATIONAL

We all have assumptions about what our business can achieve. These assumptions create our default framework for evaluating what’s possible — whether we’re aware of it or not. But if you started over and chose a different way of measuring what’s possible for yourself, your team, your company, and your industry, what could that unlock?

[Read the full article here](#)

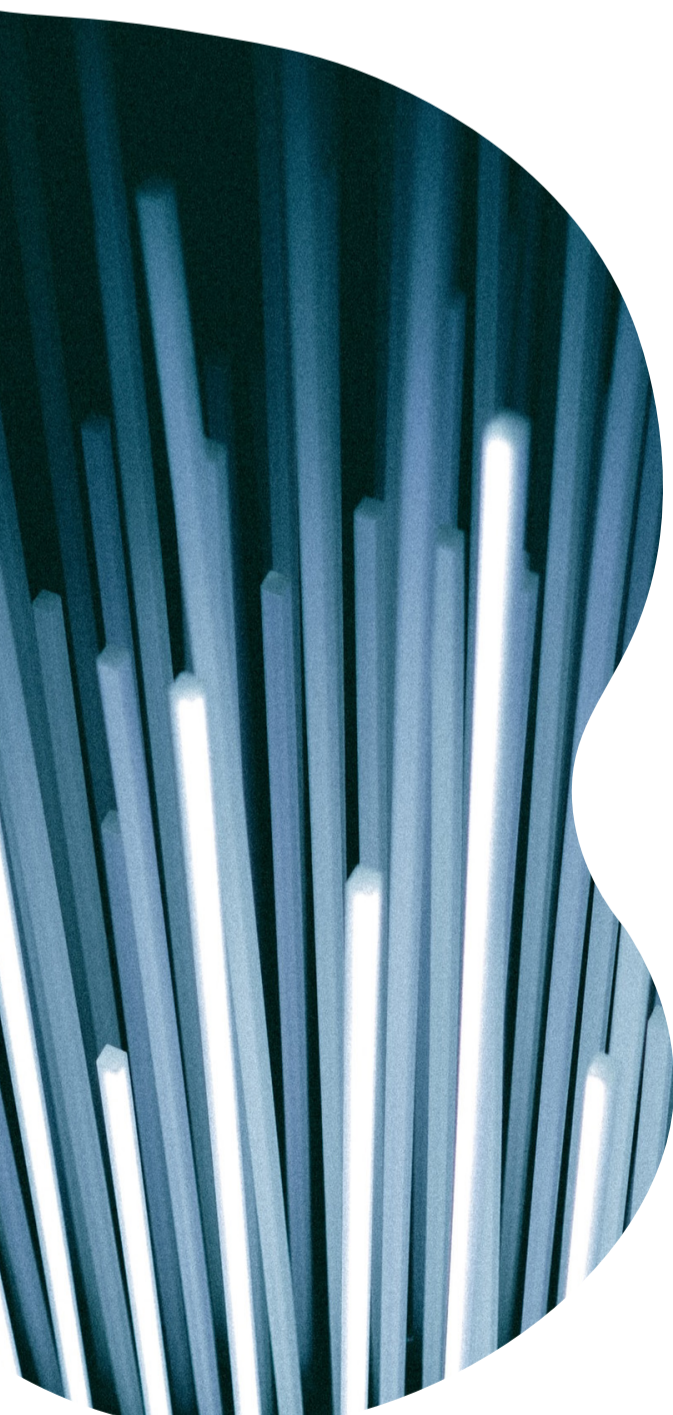


## ELECTRIC CO-OPS MUST OPERATE SMART GRIDS PART 5

STEVE COLLIER

The cost plus monopoly electric utility industry model began to erode after the 1973 OPEC oil embargo and resulting national energy crisis. The steady decline in costs and prices ended and per capita electricity consumption growth slowed. The cost-plus monopoly began crumbling as new and emerging energy technologies, new market entrants, and new business models began changing everything about planning, operating, and managing an electric utility business.

[Read the full article here](#)



## CURATED BY ERIN HARDICK

As a member of the Zpryme team, Erin is responsible for creating content by aggregating, analyzing, editing, and formatting market data for energy and technology topics such as smart cities, transportation electrification and EVs, microgrid, renewable energy and distributed energy resources, block chain, transactive energy platforms, and operational and informational technology. Erin interviews different stakeholders in these areas to understand the ecosystem as a whole. She is dedicated to finding sustainable, clean energy solutions starting in the Austin area.



## HAVE A TOPIC YOU'RE INTERESTED IN WRITING ABOUT?

I'd love to hear it. Shoot me an email at [erin.hardick@zpryme.com](mailto:erin.hardick@zpryme.com) to get involved.

